

## WING BLADE PLUG-N-PLOW MULTIPLEX JOYSTICK CONTROL

1. Turn the ON/OFF switch on the control to the ON position. The indicator LED will glow green, indicating the control is ON.

**NOTE: The ON/OFF switch can be used as an emergency stop when required.**

2. HOLD the handle switch to the DOWN position for 1.3 seconds to engage the FLOAT mode. The indicator LED will change from green to red. To cancel the FLOAT mode, momentarily press the handle switch to UP. FLOAT mode will automatically cancel after 20 minutes, and the indicator LED will turn back to green. To restart FLOAT mode, repeat step 2.

### Blade Operation Time Outs

All control functions automatically time out (shut off) after a period of time. This helps reduce wear on the pump motor and prevent unnecessary battery drain. All functions will time out after 8.0 seconds.

### Automatic Shutdown

After being idle for approx. 22 minutes, the control will automatically turn off and the indicator LED will blink from red to green. To restart the control, turn the control OFF (ON/OFF switch) and then back ON.

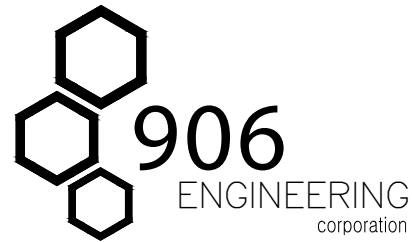
### Soft Stop

The Control automatically allows the blade to coast to a soft stop. This results in smoother operation and decreased wear on the plows hydraulic system.

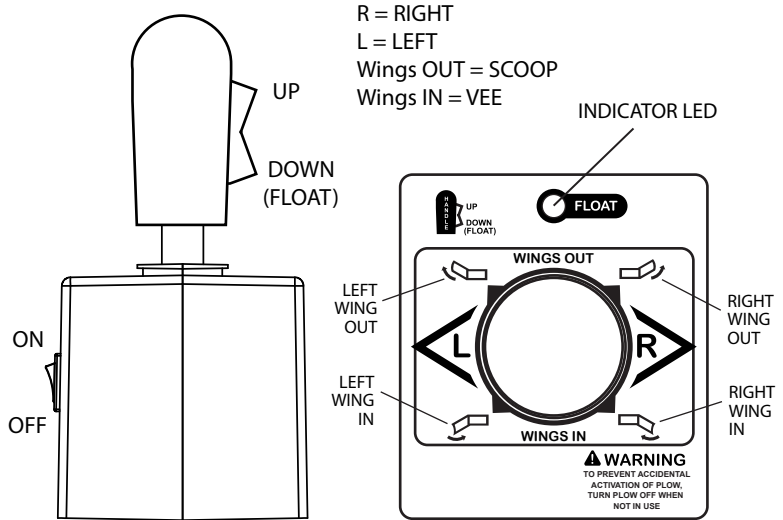
### Double Tap (UP & FLOAT)-Must Activate U-SET

A quick Double Tap of the UP button will automatically raise the plow for 6.0 seconds. A quick Double Tap of the DOWN button will automatically engage FLOAT (WARNING: Plow will immediately drop to the ground when Double Tapping the DOWN).  
NOTE: The Double Tap feature does not replace the normal operation (Press & Hold) of the buttons (UP & DOWN), it is an added feature designed to enhance the performance of the control.

## MULTIPLEX WING BLADE CONTROL



- WESTERN WIDE OUT
- FISHER XLS
- BLIZZARD POWER PLOW



ON/OFF POWER SWITCH (Located on side of joystick case)

### Security Lock Out Reset

In the event that the OEM Security Lock Out feature prevents this control from working, follow the instructions below.

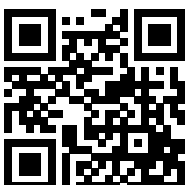
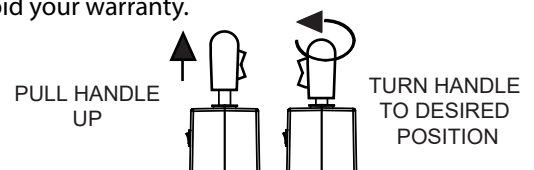
1. Hold the handle to the Left and turn the control ON. (the center indicator light turns RED) Then Release the handle.
2. Press the UP button once (the light turns to BLUE)
3. Press the DOWN button once (the light turns to RED)
4. Press the UP button once (the indicator will light Green) and the control is ready to use.

Note: Our control will reset your snowplows OEM system back to factory setting with no OEM security lock out features enabled.

### POWER HITCH for BLIZZARD ONLY

For Blizzard Plows ONLY, when the control is turned ON the GREEN indicator light will flash. This is the Power Hitch Mode. In this Mode the Power Hitch switch on your plow will work. To exit this Mode, move the handle to any function.

PULLING UP on the handle will allow you to ROTATE the handle to a left-handed (or right-handed) position.  
WARNING: Excessive rotating of the handle can damage the controller & may void your warranty.



**WARNING**

TO PREVENT ACCIDENTAL ACTIVATION OF PLOW, TURN PLOW OFF WHEN NOT IN USE