

1. Turn the ON/OFF switch on the control to the ON position. The indicator LED will glow green, indicating the control is ON.

**NOTE: The ON/OFF switch can be used as an emergency stop when required.**

2. HOLD the handle to the DOWN position for 1.3 seconds to engage the FLOAT mode. The indicator LED will change from green to red. To cancel the FLOAT mode, momentarily press the handle to UP. FLOAT mode will automatically cancel after 20 minutes, and the indicator LED will turn back to green. To restart FLOAT mode, repeat step 2.

### Blade Operation Time Outs

All control functions automatically time out (shut off) after a period of time. This helps reduce wear on the pump motor and prevent unnecessary battery drain. All functions will time out after 8.0 seconds.

### Automatic Shutdown

After being idle for approx. 22 minutes, the control will automatically turn off and the indicator LED will blink from red to green.

To restart the control, turn the control OFF (ON/OFF switch) and then back ON.

### Soft Stop (NOTE: This feature does NOT make a noticeable difference on the Boss Vee Plow)

The Control automatically allows the blade to coast to a soft stop. This results in smoother operation and decreased wear on the plows hydraulic system.

### Double Tap (UP & FLOAT)

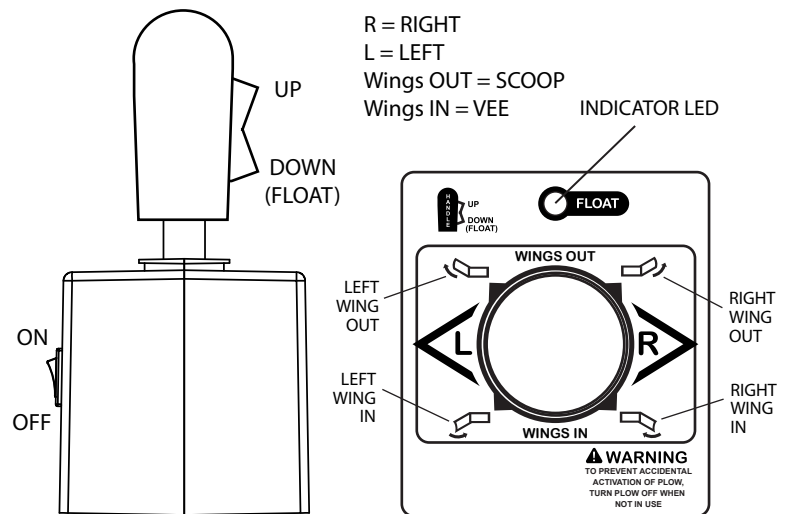
A quick Double Tap of the handle UP will automatically raise the plow for 6.0 seconds. A quick Double Tap of the handle DOWN will automatically engage FLOAT (WARNING: Plow will immediately drop to the ground when Double Tapping the DOWN).

NOTE: The Double Tap feature does not replace the normal operation (Press & Hold) of the handle (UP & DOWN), it is an added feature designed to enhance the performance of the control.

\*For Hiniker & Meyer (12-Pin), headlights will switch when the control is plugged in. If you would like a separate headlight switch, contact 906 Engineering and ask about a headlight switch kit.\*



- CURTIS     MEYER V-71
- MEYER (9-Pin) V-66     AIRFLO
- MEYER V-68 & V70     BOSS
- HINIKER (Single Acting Cylinders)
- HINIKER (Double Acting Cylinders)
- WESTERN/FISHER (14-Pin)



ON/OFF POWER SWITCH (Located on side of joystick case)

## ON/OFF SWITCH

### NOTE: ON/OFF/ON SWITCH for Blizzard

See your Blizzard plows owners manual about the Power Hitch Operation function.



## WARNING

**TO PREVENT ACCIDENTAL ACTIVATION OF PLOW, TURN CONTROL OFF WHEN NOT IN USE**

PULLING UP on the handle will allow you to ROTATE the handle to a left-handed (or right-handed) position. WARNING: Excessive rotating of the handle can damage the controller & may void your warranty.

